






LOKALEOVERSIGT

INFORMATION OM HOTELLET'S MØDELOKALER SAMT MULIGE BORDOPSTILLINGER

LOKALER	LOFTS- HØJDE METER	m ²	 BIOGRAF	 MØDEBORD	 SKOLEBORDE	 U-BORD	 GRUPPEBORDE
LOUNGE V	2,8	70	-	8	-	-	24
M1	2,8	97	60	16	50	20	30
M2	2,8	111	90	18	60	24	48*
M1 + M2	2,8	209	120	-	96	-	66
M4	2,8	31	-	9	-	-	-
M5	2,8	31	30	12	12	14	-
M7	2,8	25	-	9	-	-	-
K3	2,8	168	154	28	72	34	54*
K4	2,8	157	144	28	70	34	54*
P-LOUNGE	2,9	41	-	18	-	-	-
P1	3,0	105	70	22	32	24	36*
P2	3,0	114	66	22	42	22	48*
P3	3,0	56	36	16	20	16	18*
P4	2,9	25	-	10	-	-	-
KILDEN	3,5	403	365	-	250	50	120

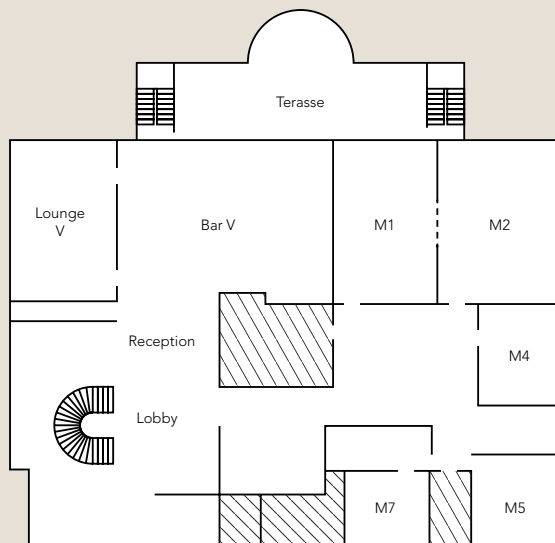
* 6 personer pr. bord – kan ændres til 8 personer pr. bord.
Da sidder 2 personer med ryggen til lærredet.

** Kan stilles op i Kongresopstilling med borde til 365.

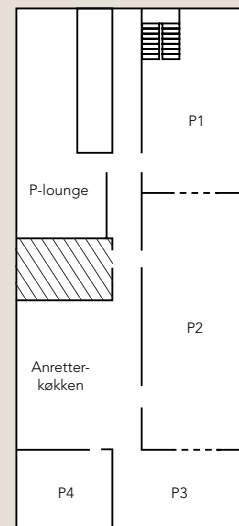
LOKALEOVERSIGT

ILLUSTREREREDE LOKALEPLACERINGER

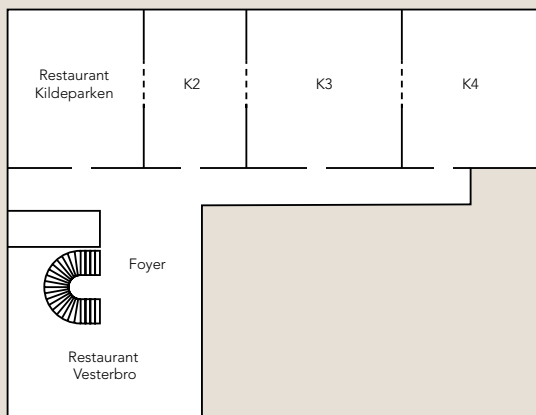
STUEN



15. SAL



1. SAL



2. SAL

